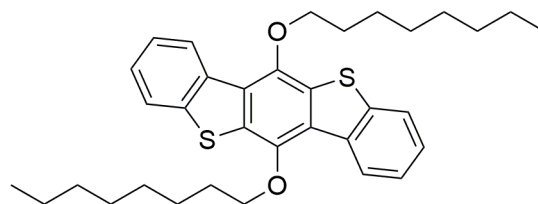


SR 358 C\_Proton\_ft-1-3.jdf



3-b

abundance

1.6  
1.5  
1.4  
1.3  
1.2  
1.1  
1.0  
0.9  
0.8  
0.7  
0.6  
0.5  
0.4  
0.3  
0.2  
0.1  
0

8.611  
8.600  
8.595  
8.587  
8.577

8.462

7.873  
7.869  
7.863  
7.859  
7.857  
7.851  
7.841

7.515  
7.511  
7.497  
7.493  
7.483  
7.475  
7.471  
7.457

7.247

6.984

X : parts per Million : Proton