



**Loughborough  
University**

# Using figshare to meet Loughborough University's Research Data Management requirements

Dr Gareth Cole, Research Data Manager



# Who am I?

- Research Data Manager at Loughborough – March 2015
- Data Curation Officer – University of Exeter (2011-2015)
- PhD Maritime History – Exeter (2008)
- Twitter - [@DrGarethCole](#) and [@LboroRDM](#)
- ORCID - <http://orcid.org/0000-0001-7493-0137>

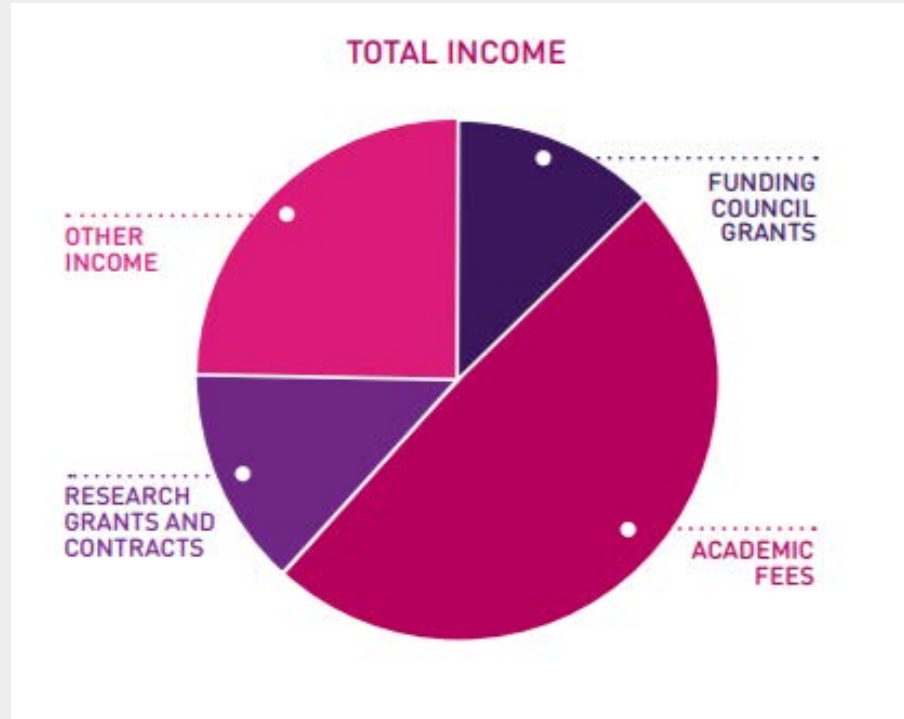


.....  
**#InspiringWinners** since 1909

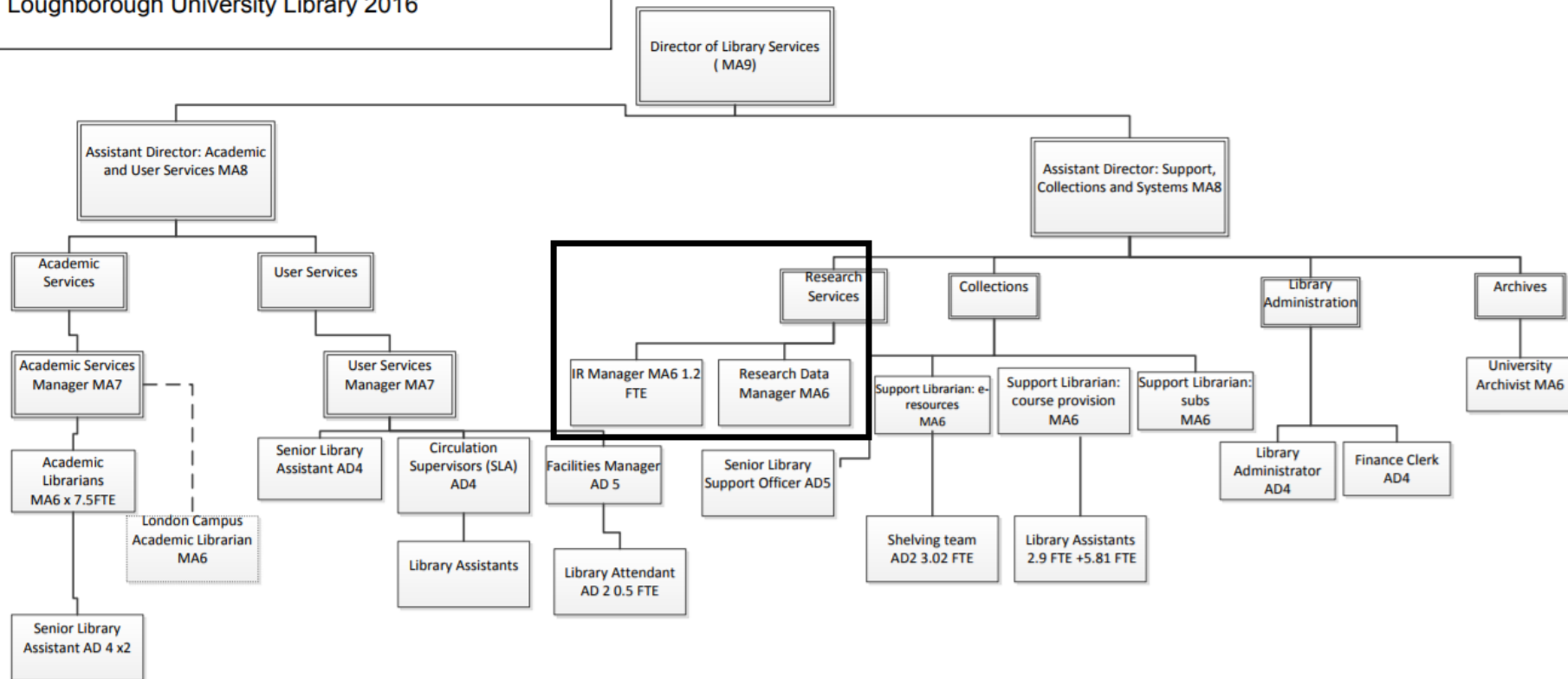
# Facts and figures

- Students (Jan 2017):
  - UG – 14056
  - PGT – 4612
  - PGR – 1408
- Academic staff – 754.3 FTE (Jan 2017)
- Research grants and contracts income - £40.1m (2015-16) (14% of total income, of which £20.5m Research Councils and Charities)
  - Latter figure grew to c£40m in 2016-17
- Two campuses – Loughborough and London
- Top 10 in all the UK league tables

# Income by type at Loughborough (2015-16)



# Loughborough University Library 2016



# Changing policy environment in UK



# Researcher and Institution expectations

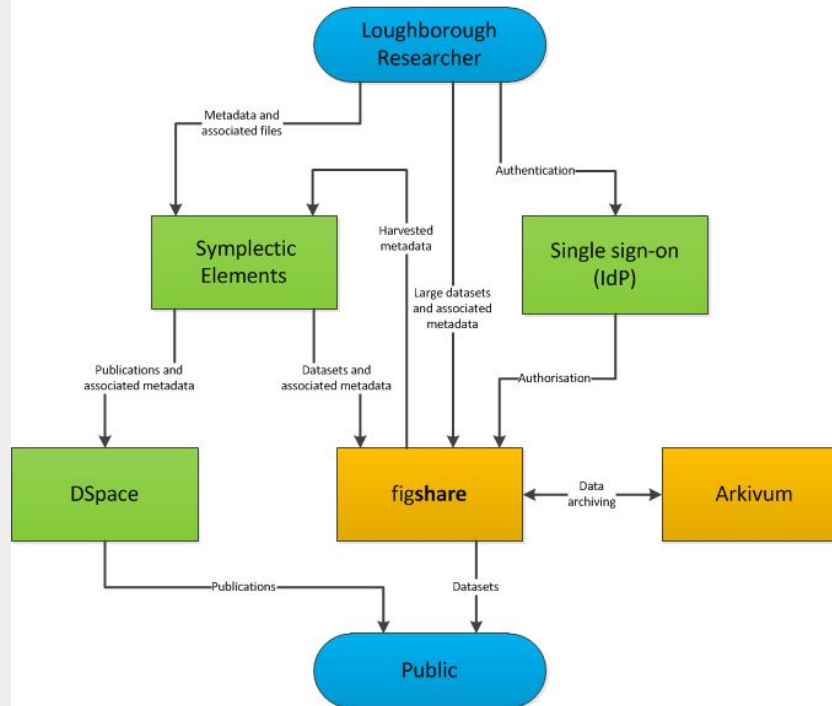
- Researcher
  - All RCUK funded articles should have a data availability statement
  - Deposit all articles within three months of acceptance/publication
  - Make data: “As open as possible. As closed as necessary”
- Institution
  - Archive and preserve data for 10+ years
  - Advocate to research community
  - Provide a Data Repository?

# How this affected Loughborough?

- Or “How we got the cash from senior management”
- EPSRC expectations – c75% of research income at the time
- Fitted with the University Strategy priorities
  - Increase research visibility
  - Increase research income
  - Increase citation counts
- Led to:
  - Recruitment of Research Data Manager (in Library)
  - Work with figshare (front end) and Arkivum (back end) to create the Loughborough Data Repository
  - Establishment of a Research Data Service

## RDM – the Loughborough Solution

Publications and Research Data Management systems and their interactions



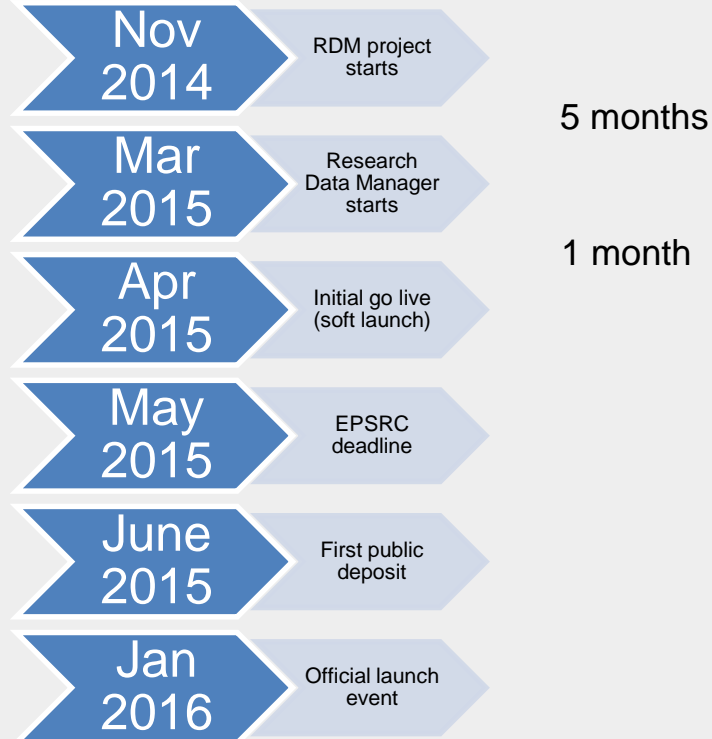
<https://doi.org/10.6084/m9.figshare.1604781.v1>



Loughborough  
University

.....  
**#InspiringWinners** since 1909

# Implementation Timeline



# How is figshare used by researchers?

- Open records
- Embargoed records
- Confidential records
- Reserving DOIs
- Private records
- Projects
- NOT JUST FOR COMPLIANCE 😊

# Deposits

- Over 180 so far and counting
- Not just compliance based
  - Researchers who want to increase their visibility
  - Researchers with non-text based outputs:  
[https://lboro.figshare.com/Urban\\_Graphic\\_Object\\_Archive](https://lboro.figshare.com/Urban_Graphic_Object_Archive)
- Data related to PhDs

# Supporting Research

- Data repository named in grant applications
  - Major element within one application i.e. not just in the DMP!
- RD Manager a named advisor in a number of applications
- RD Manager a co-author on a number of conference papers

# Challenges

- Culture change
- Reaching the academic community
- What data?
  - Raw
  - Processed
  - What format?
  - How much documentation...
- Language:
  - Is there data in Humanities?
  - What is metadata...?



# The future

- Increase PhD engagement and use
  - Posters
  - Thesis data
- Increase academic take up
- UG work
  - Final year project data
- Digital Preservation

# Get in touch

- Gareth Cole
  - Email: [rdm@lboro.ac.uk](mailto:rdm@lboro.ac.uk) or [g.j.cole@lboro.ac.uk](mailto:g.j.cole@lboro.ac.uk)
  - Twitter: [@LboroRDM](https://twitter.com/LboroRDM) or [@DrGarethCole](https://twitter.com/DrGarethCole)
- Scholarly Communications webpages:  
<http://www.lboro.ac.uk/research/scholcomms/>



## Our outstanding campus

Largest single site green campus in the UK



Loughborough  
University

.....  
**#InspiringWinners** since 1909