



## Correction

# Correction: A Bioartificial Renal Tubule Device Embedding Human Renal Stem/Progenitor Cells

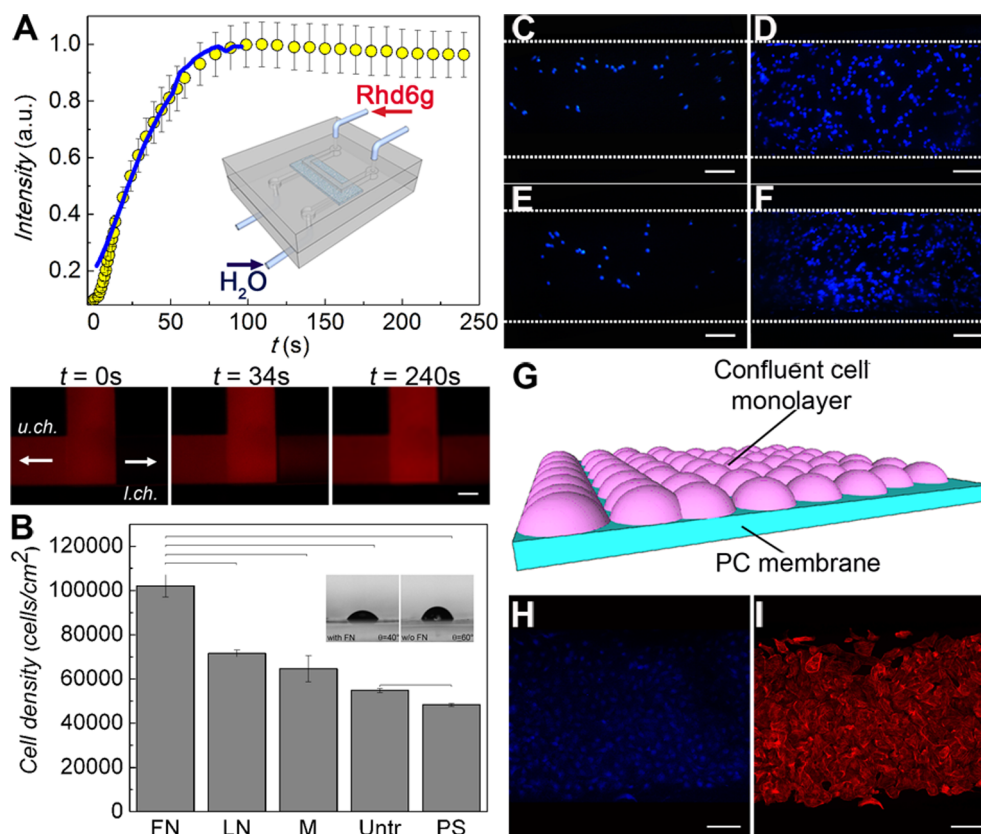
The *PLOS ONE* Staff

The figure legends for Figure 2 and 5 are incorrect. There are incorrect values presented for the scale bars in the legends. Please see these figures and their corrected legends below.

**Citation:** The *PLOS ONE* Staff (2014) Correction: A Bioartificial Renal Tubule Device Embedding Human Renal Stem/Progenitor Cells. *PLoS ONE* 9(6): e100141. doi:10.1371/journal.pone.0100141

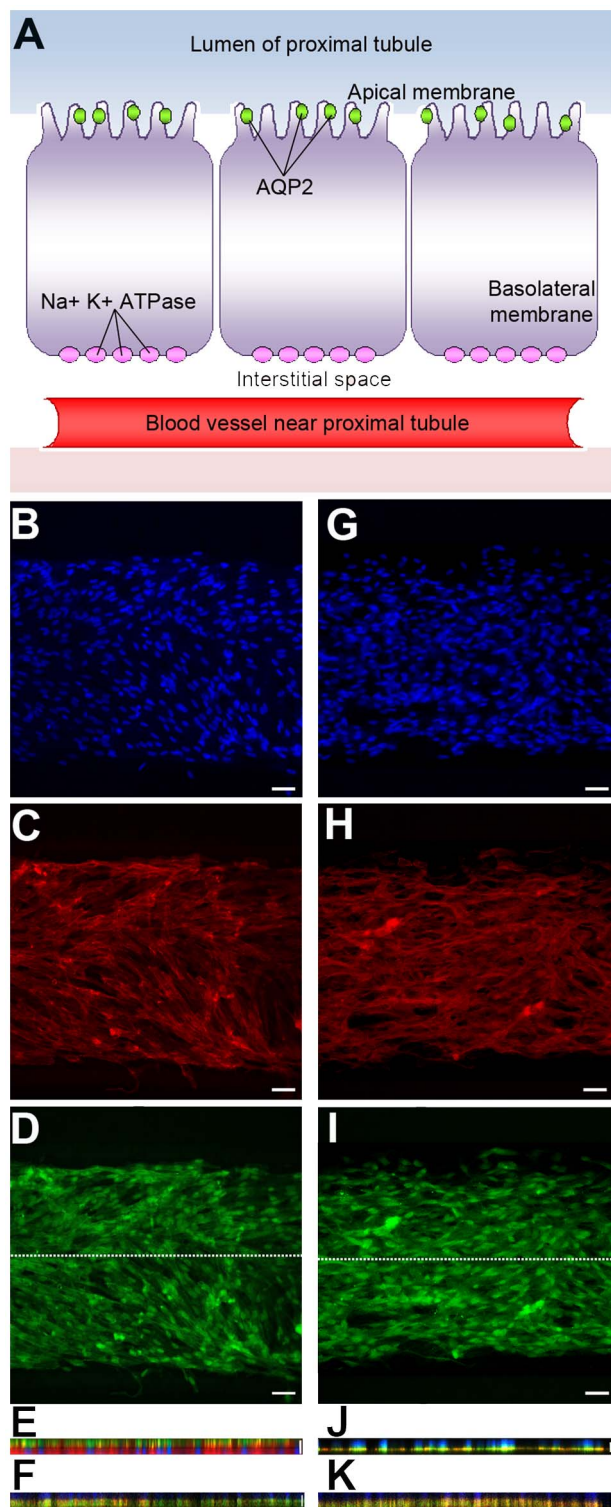
**Published:** June 6, 2014

**Copyright:** © 2014 The *PLOS ONE* Staff. This is an open-access article distributed under the terms of the Creative Commons Attribution License, which permits unrestricted use, distribution, and reproduction in any medium, provided the original author and source are credited.



**Figure 2. On-chip formation of a confluent monolayer of renal tubule cells.** (A) Device fluidic characterization by diffusion test: a solution of rhodamine 6G was fed in the upper channel while distilled water was fed in the lower channel (interstitial). The increase in the fluorescence intensity with time at the outlet of the lower channel was correlated to the rhodamine diffusion into the channel. The superimposed line is the corresponding data in a standard cell culture insert using the same porous membrane. Inset: device and counter-current flow schematics. Scale bars = 250  $\mu$ m. (B) HK-2 cell proliferation described by MTS assay after 2 days of culture on the membranes functionalized with fibronectin (FN), laminin (LN) and Matrigel (M), compared to the untreated membranes (Untr.) and the positive controls of polystyrene dishes (PS). Results are expressed as (mean  $\pm$  standard deviation) of three *independent experiments*. Bars show statistically significant differences ( $P < 0.05$ ). (inset) Optical micrographs of water droplets on membranes with or without FN, and corresponding WCA value. (C-F) Optimization of HK-2 cell growth in the device. A starting concentration of  $5 \times 10^5$  cells mL<sup>-1</sup> was insufficient for a successful colonization of the membrane by cells (C), while a concentration  $\geq 1.5 \times 10^6$  cells mL<sup>-1</sup> led to a confluent growth (D). Culturing cells for 4 days under a constant flux ( $1 \mu$ L min<sup>-1</sup>) of cell medium did not allow the formation of a continuous monolayer (E). Cell confluence was instead achieved by letting seeded cells in a static fluid environment for 24 h and culturing them over 4 days by changing the complete growth medium twice a day (F). Scale bars = 100  $\mu$ m. (G) Scheme of the resulting cell confluent monolayer on the membrane. Confluent living cells were stained with DAPI (blue) (H) and TRITC-phalloidin (red) (I). Scale bars = 100  $\mu$ m.

doi:10.1371/journal.pone.0087496.g002



**Figure 5 Polarization of ARPCs following FSS in the chip.** (A) Cell model of proximal tubule cells with transporters. The scheme shows the AQP2 transporter localized in the apical membrane and the  $\text{Na}^+\text{K}^+\text{ATPase}$  present in the basolateral membrane. (B-J) Cellular arrangement of ARPCs grown into the microfluidic device after 6 hs of FSS at  $0.2 \text{ dyn/cm}^2$ . Two different chips were stained in (B-E) and in (G-J), respectively. Immunofluorescence images of stained DNA (DAPI, blue) (B, G), actin (TRITC-phalloidin, red) (C, H), AQP2 (FITC-anti goat, green) (D) and  $\text{Na}^+\text{K}^+\text{ATPase}$  pump (I). X-Z section confocal images for AQP2 (apical marker protein) (E) and  $\text{Na}^+\text{K}^+\text{ATPase}$  pump (basolateral marker protein)

(J) following FSS in the chip. Scale bars =  $100 \mu\text{m}$ . The section along the longitudinal axis of the microchannel is indicated by the white line in D and I, respectively. X-Z section confocal images were also collected for AQP2 (F) and  $\text{Na}^+\text{K}^+\text{ATPase}$  pump (K) in statically cultured ARPCs. Scale bars =  $15 \mu\text{m}$ .  
doi:10.1371/journal.pone.0087496.g005

## Reference

1. Sciancalepore AG, Sallustio F, Girardo S, Gioia Passione L, Camposeo A et al (2014) A Bioartificial Renal Tubule Device Embedding Human Renal Stem/Progenitor Cells. PLoS ONE 9(1): e87496. doi:10.1371/journal.pone.0087496