
This item was submitted to [Loughborough's Research Repository](#) by the author.
Items in Figshare are protected by copyright, with all rights reserved, unless otherwise indicated.

Real-time autonomous remote monitoring of biogas for rural communities in developing countries

PLEASE CITE THE PUBLISHED VERSION

<http://www.ukcds.org.uk/>

PUBLISHER

© the authors

VERSION

VoR (Version of Record)

PUBLISHER STATEMENT

This work is made available according to the conditions of the Creative Commons Attribution-NonCommercial-NoDerivatives 4.0 International (CC BY-NC-ND 4.0) licence. Full details of this licence are available at:
<https://creativecommons.org/licenses/by-nc-nd/4.0/>

LICENCE

CC BY-NC-ND 4.0

REPOSITORY RECORD

Radu, Tanja, Richard E. Blanchard, Andrew D. Wheatley, Fiachra Collins, and Dermot Diamond. 2019. "Real-time Autonomous Remote Monitoring of Biogas for Rural Communities in Developing Countries". figshare. <https://hdl.handle.net/2134/26743>.

Real-time autonomous remote monitoring of biogas for rural communities in developing countries

Tanja Radu¹, Richard Blanchard² and Andrew Wheatley¹

Fiachra Collins³ and Dermot Diamond⁴

¹School of Civil and Building Engineering, ²School of Electronic, Electrical and Systems Engineering, Loughborough University, Loughborough, UK

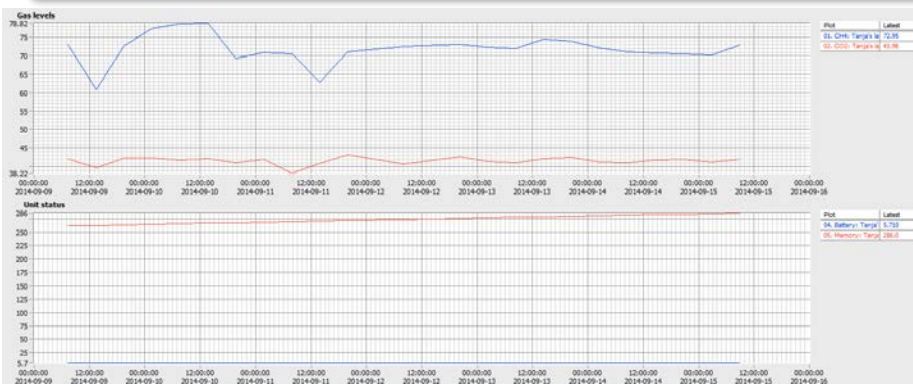
³Ambisense Limited, Dublin, Ireland ⁴Dublin City University, Dublin, Ireland

Rural Hybrid Energy Enterprise Systems (RHEES) is a research partnership between 6 UK and 7 Indian Universities. The aim of this project is to develop best practise at a smaller community scale which makes use of hybrid and combinations of biofuels. The idea is to improve rural energy availability, equity of cost and to generate an economic stimulus from the desire to provide greater energy security and reduced environmental impact.

Our part of the project is AD deployment. Here, we summarise how a novel gas monitoring device for remotely controlled, autonomous monitoring of AD might avoid shock loadings from heterogeneous feedstocks.

The main aim of the monitoring is to enable autonomous remote monitoring of: CH₄, CO₂, O₂, pressure, temperature and H₂S. These systems are to be coupled with solar panels which will have two roles: powering the monitoring system and hybrid solar-thermal heating of the digesters.

An existing landfill gas monitoring system developed by Ambisense Limited and Dublin City University have been identified as an excellent autonomous wireless gas sensing platforms with reliable long term performance and reduction in component cost. These platforms are fully developed and field deployable, several of which are already in use on various landfill sites. Sensing of CO₂ and CH₄ is achieved by high-accuracy infrared absorbance sensors, which have good long-term reliability. For pressure sensing, piezoelectric sensors are deployed. This is critical for monitoring and understanding gas flows. Autonomous operation is achieved by custom-programmed microcontroller circuitry, which also manages gas extraction, sampling, data logging and remote transmission (GSM communications). This provides adjustable sampling and reporting frequency. Monitoring data is being sent to the cloud via GSM transmissions, and fully accessible via an online portal for remote monitoring by the facility management.



Loughborough University
ambisense
AUTONOMOUS GAS MONITORING

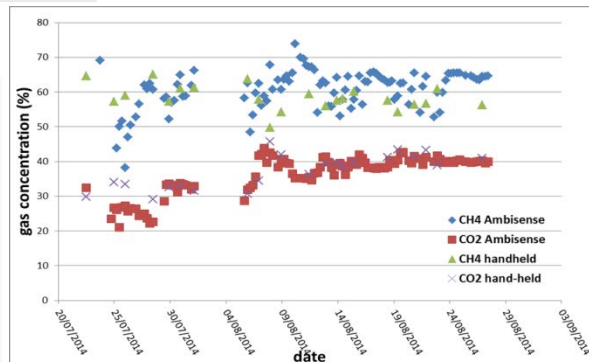
Lab-scale AD	
CH ₄	62.95 %v/v
CO ₂	39.98 %v/v
Pressure	9.75 mBar
Battery	5.71 V
Memory	286.00 / 1600
MON 15/9/2014 08:47	

Screen shots of online software for real-time remote monitoring

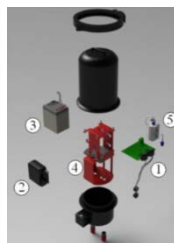
SENSING/MONITORING

Autonomous remote monitoring of: CH₄, CO₂, O₂, pressure, temperature, H₂S

- Using autonomous wireless gas sensing platforms- reliable long term performance and reduction in component cost
- The data sent to the cloud via GSM transmissions, and is accessible via an online portal for remote monitoring by the facility management
- CO₂ and CH₄ sensing: high-accuracy infrared absorbance sensors
- Pressure sensing: piezoelectric sensors (critical for understanding gas flows)
- Autonomous operation is achieved by custom-programmed microcontroller circuitry, which also manages data logging and remote transmission (GSM communications)
- Hybrid solar thermal heating of the digesters



Monitoring quality: comparison with hand-held device



Autonomous landfill gas monitoring platform developed by Ambisense Limited,
Components: (1) control board, (2) GSM module, (3) battery, (4) extraction pump, (5) sampling chamber and sensors, (6) protective casing