
This item was submitted to [Loughborough's Research Repository](#) by the author.
Items in Figshare are protected by copyright, with all rights reserved, unless otherwise indicated.

Top-down or Bottom-up: A decision-making framework for faecal sludge and septage management implementation in urban India

PLEASE CITE THE PUBLISHED VERSION

PUBLISHER

WEDC, Loughborough University

VERSION

VoR (Version of Record)

PUBLISHER STATEMENT

Presented at the 42nd WEDC International Conference.

LICENCE

CC BY-NC-ND 4.0

REPOSITORY RECORD

Hyun, Christopher, and Avinash Kumar. 2021. "Top-down or Bottom-up: A Decision-making Framework for Faecal Sludge and Septage Management Implementation in Urban India". Loughborough University.
<https://hdl.handle.net/2134/16831813.v1>.

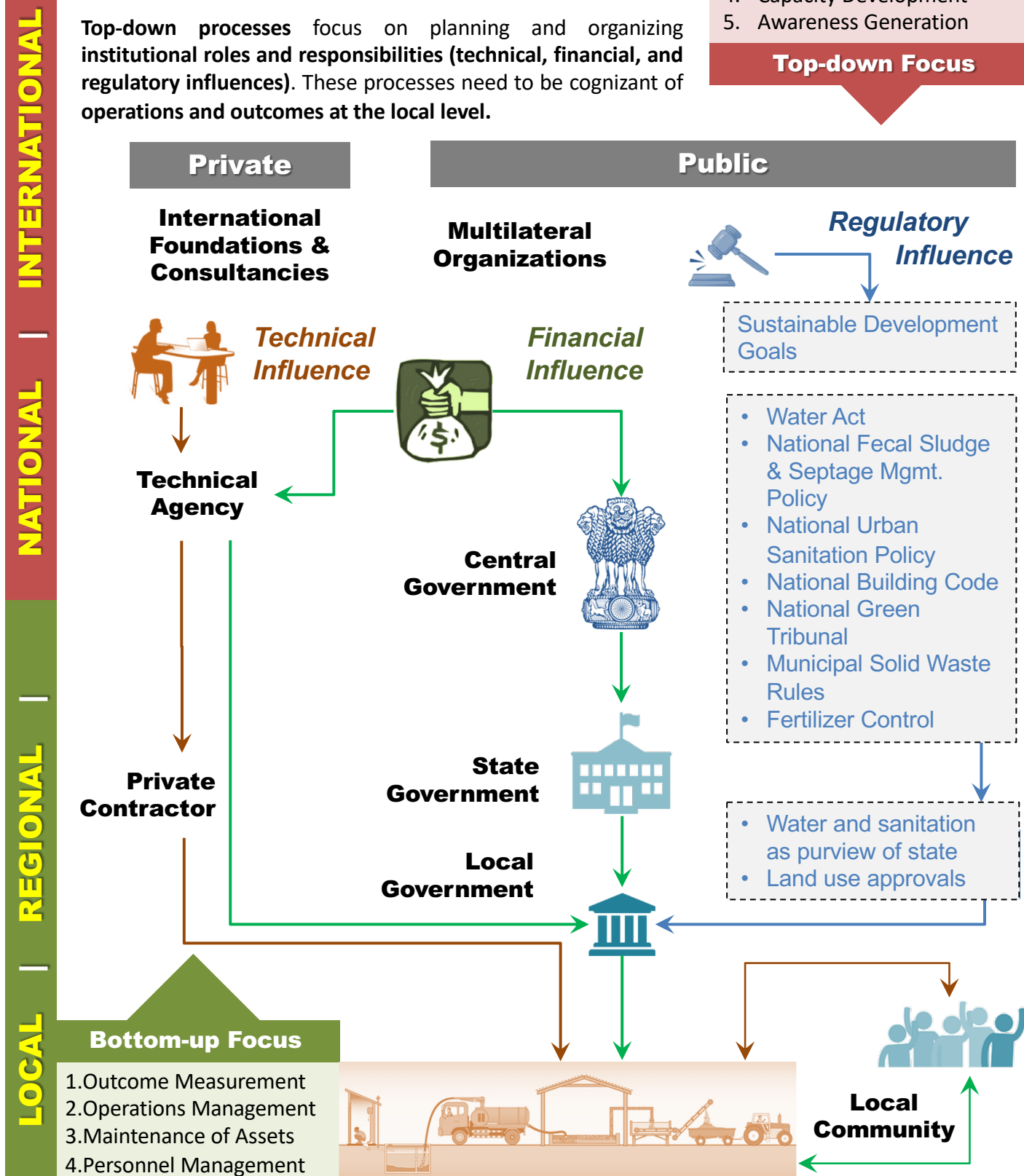
Top-down or Bottom-up:

A decision-making framework for faecal sludge and septage management implementation in urban India

1. Standards & Norms
2. Institutional Guidelines
3. Financing for Assets
4. Capacity Development
5. Awareness Generation

Top-down Focus

Top-down processes focus on planning and organizing institutional roles and responsibilities (technical, financial, and regulatory influences). These processes need to be cognizant of operations and outcomes at the local level.



Christopher Hyun and Avinash Kumar

42nd WEDC INTERNATIONAL CONFERENCE

ONLINE: 13 –15 September 2021

Equitable and Sustainable WASH Services
Future challenges in a rapidly changing world



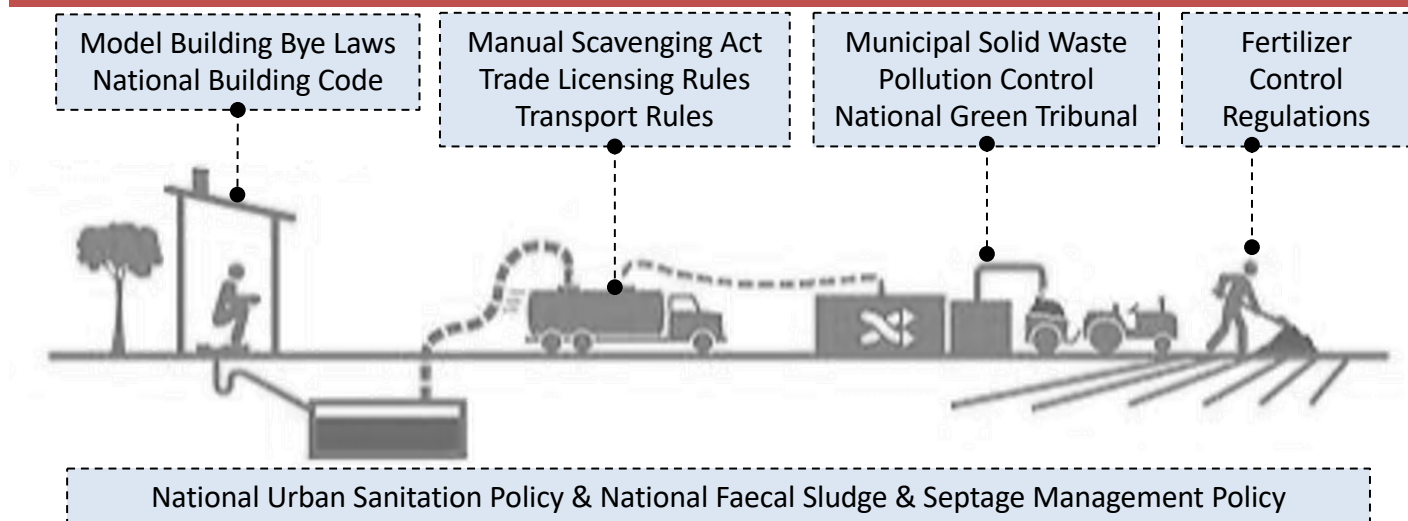
Top-down or Bottom-up:

A decision-making framework for faecal sludge and septage management implementation in urban India

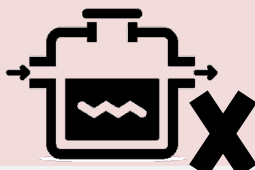







Top-down processes of international and national agencies should address **key challenges** observed from various case studies of **faecal sludge management** projects in urban India.

Bottom-up processes refer to the roles and responsibilities of **local and regional agencies** that are **closer to addressing challenges on the ground**.

Operations and Outcomes at the Local Level



Key Challenges observed across the Sanitation Service Chain

User Interface	Collection	Treatment	Disposal/Reuse
 <p>Poor construction quality on on-site systems</p>	 <p>Unsafe means of collecting & transporting faecal sludge</p>	 <p>Unsustainable O&M of Assets</p>	 <p>No support to establish linkages for marketing treated by-products</p>
 <p>Absence of periodic maintenance of on-site systems</p>	 <p>Environmental justice for workers & local communities</p>	 <p>Unregulated disposal & open discharge of faecal sludge</p>	 <p>Pollution of water bodies and aquifers</p>

Christopher Hyun and Avinash Kumar

42nd WEDC INTERNATIONAL CONFERENCE

ONLINE: 13 –15 September 2021

Equitable and Sustainable WASH Services
Future challenges in a rapidly changing world

